
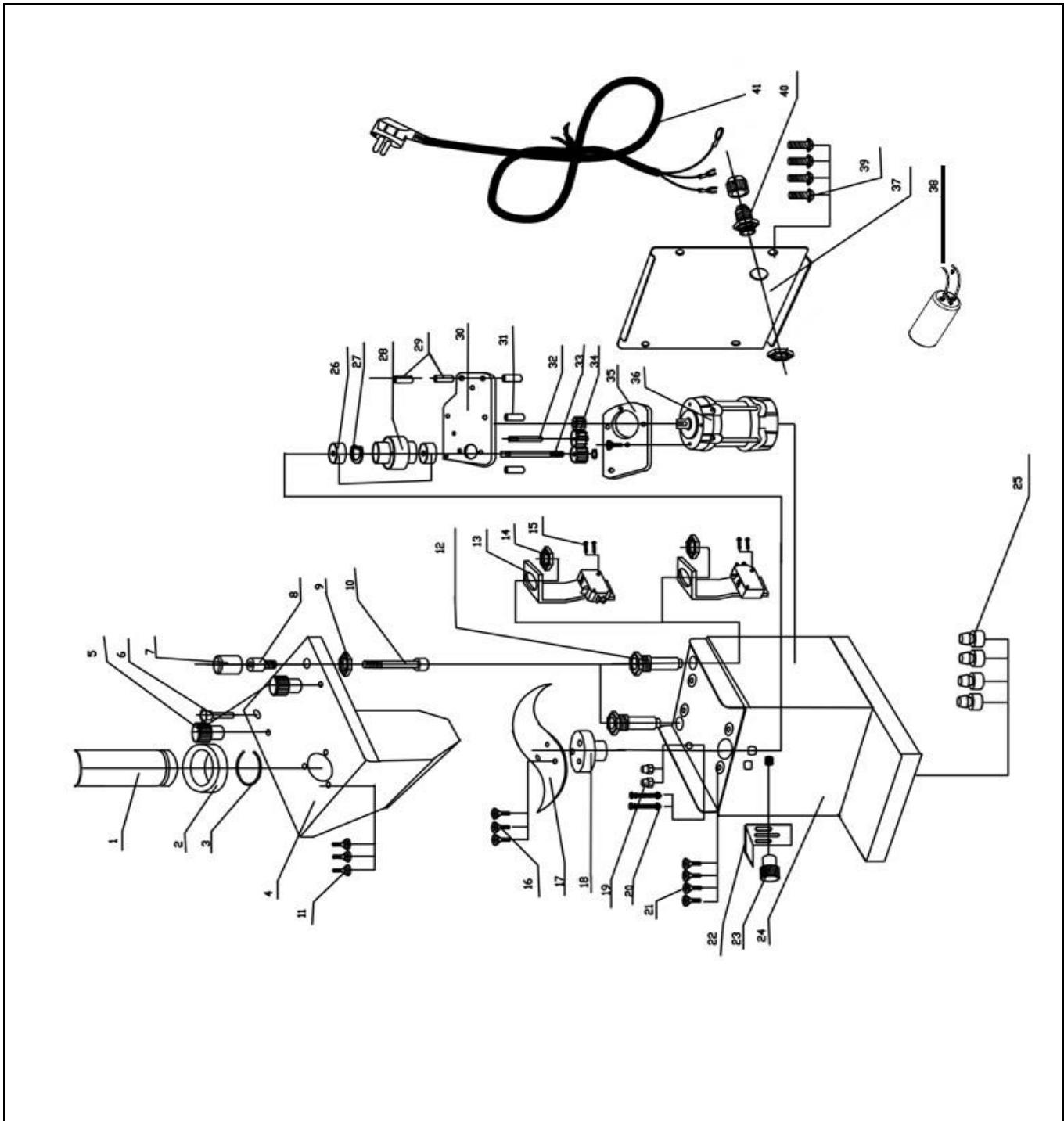



Drawing

 <p style="font-size: 2em; font-weight: bold; margin: 0;">HENDI</p> <p style="font-size: 0.8em; margin: 0;">FOOD SERVICE EQUIPMENT</p> <p>Hendi B.V. Steenoven 21 3911 TX Rhenen The Netherlands</p>	Batch #	Appliance part#
	662474 and up	265109
	Description	
	Sausage cutter - electric	

Date	28-10-2016	Revision #	Revision version 1,1
Revision	Modification gearset from plastic to steel gears and modification knife holder.		



Bill of materials (BOM)

 <p>Hendi B.V. Steenoven 21 3911 TX Rhenen The Netherlands</p>	Batch #	Appliance part#
	662474 and up	265109
	Description	
Sausage cutter - electric		


Date	28-10-2016	Revision #	Revision version 1,1
Revision	Modification gearset from plastic to steel gears and modification knife holder.		

Item	Description	Part#	Quantity	Remark	Picture
1	Funnel	n/a	1		
2	Support ring	n/a	1		
3	Ring	n/a	1		
4	Upper housing	n/a	1		
5	Nut	919606	2		
6	Pin	n/a	1		
7	Start button (complete assembly)	926895	1	Incl. item 8,9,10,11	
8	Insert	nss	1	Available as 926895	
9	Nut M11	nss	1	Available as 926895	
10	Pin	nss	1	Available as 926895	
11	Phillips countersunk screw M5x5	n/a	3		
12	Slide linkage	n/a	2		
13	Microswitch	926642	2		
14	Nut	n/a	2		
15	Screw M3x16	n/a	4		
16	Phillips countersunk screw M5x4	nss	3	Available in 919613	
17	Knife	919613	1	Incl. item 16	
18	Knife holder	nss	1	Available as 941768	
19	Lock nut M5	n/a	2		
20	Socket-head screw M5x22	n/a	2		
21	Phillips countersunk screw M4x22	n/a	4		
22	Distance bracket	919651	1		
23	Nut	919606	1		
24	Housing	n/a	1		
25	Feet	919637	4	Sold as set of 4 pcs.	
26	Bearing	926659	2	Also in set 941768	
27	Waved washer	nss	1	Available as 941768	
28	Bearing assembly complete with knife holder	941768	1	Incl. item 18,26,27 and 33	
29	Spacer	n/a	3		
30	Bracket	n/a	1		
31	Spacer	n/a	2		
32	Stud	n/a	1		
33	Driveaxle	nss	1	Available as 941768	
34	Gear set	941775	1	Including three gears	
35	Bracket motor	n/a	1		
36	Motor	919644	1		
37	Back cover	n/a	1		
38	Capacitor	930526	1		
39	Round head screw M4x6	n/a	4		
40	Cord inlet with retention	n/a	1		
41	Powercord	205303	1		

n/a -> not available

nss -> not sold separately

Circuit diagram

 HENDI FOOD SERVICE EQUIPMENT Hendi B.V. Steenoven 21 3911 TX Rhenen The Netherlands	Batch #	Appliance part#
	662474 and up	265109
	Description	
	Sausage cutter - electric	

Date	28-10-2016	Revision #	Revision version 1,1
Revision	Modification gearset from plastic to steel gears and modification knife holder.		

